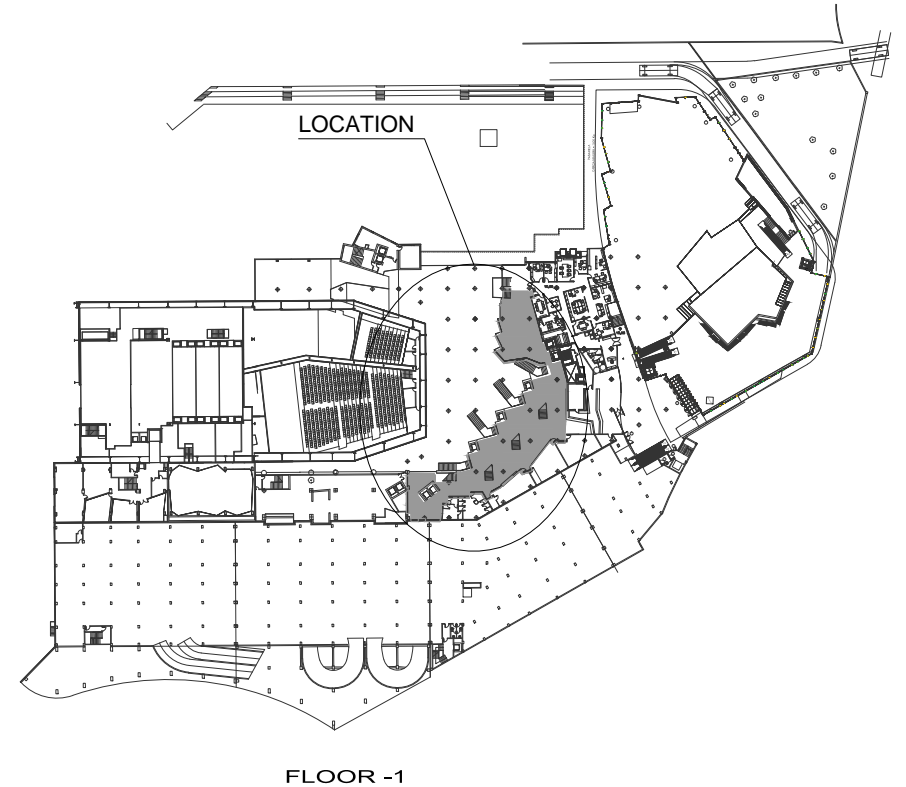
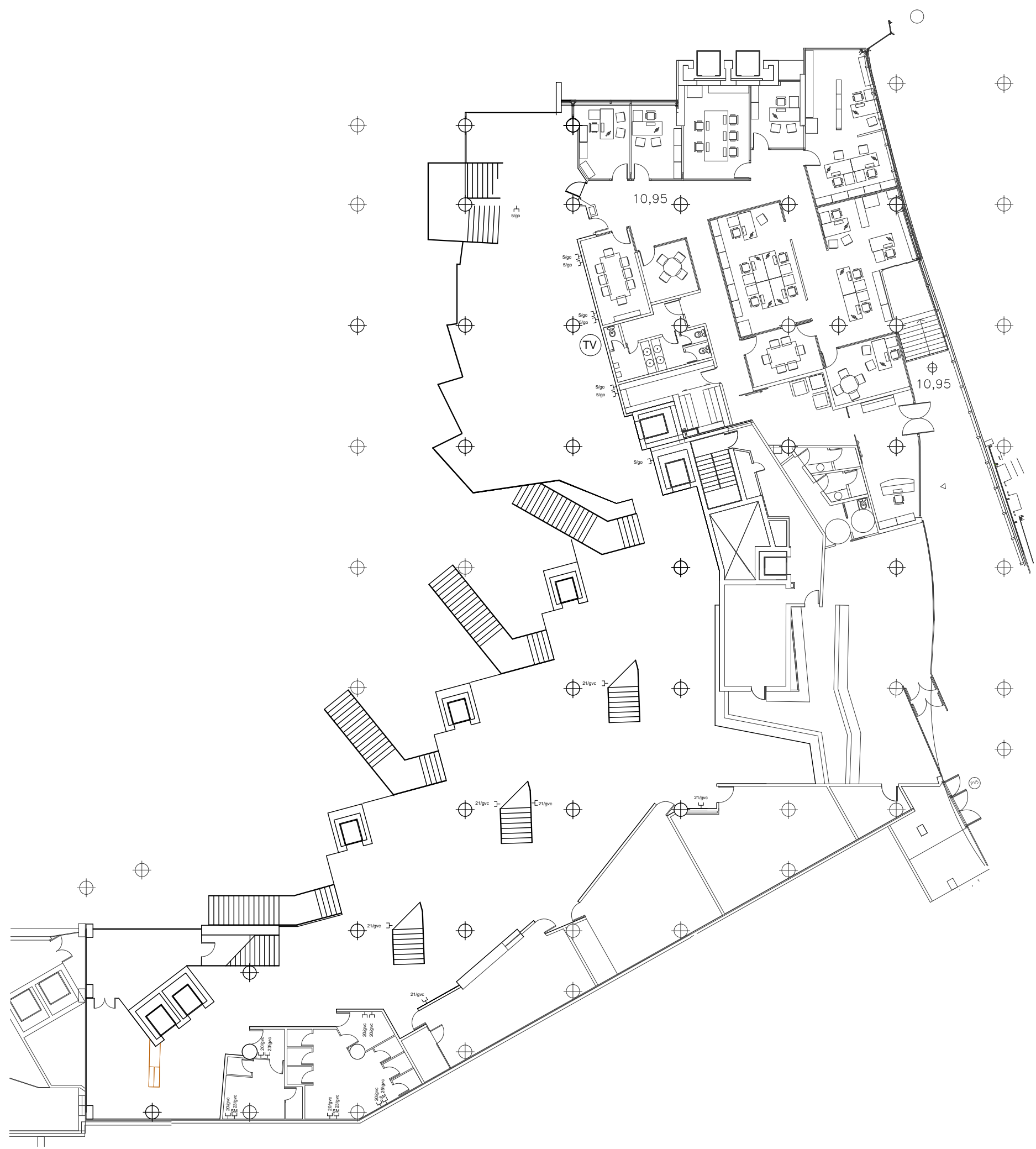


- SOCKET F+N+T 16A/250V (STAGE EQUIPMENT)
- SOCKET F+N+T 16A/250V (MULTI - USE)
- SOCKET F+N+T 16A/250V (STAGE EQUIPMENT),WATERTIGHT
- SOCKET F+N+T 16A/250V (HAND DRYER)
- SOCKET F+N+T 16A/250V (HEATER) WITH 2-POLE SWITCH, 10A/250V
- SAFETY SOCKET F+N+T 20VA, INSTALLATION IN PROTECTION VOLUME
- CABINET FITTED WITH 4 POWER OUTLETS ON FLOOR
- CABINET FITTED WITH 4 POWER OUTLETS ON WALL
- CABINET FITTED WITH 2 POWER OUTLETS ON FLOOR, 1 RJ-45
- FLOOR-MOUNTED CABINET WITH 1 AUTOMATIC SWITCH, 16 A, 1 x 25 A TRIP-SWITCH, 2 CHUCO PLUGS, 2 RJ-45
- SET OF 1 PROTECTION SWITCH, 1 POWER OUTLET, 3P+T 32A/400V, 3 PROTECTION SWITCHES & 3 POWER OUTLETS 2P+T 16A/230V
- SOCKET F+N+T 10-16A/250V (AUDIO OUTLET)
- CABINET WITH TERMINALS
- SERVICE & JUNCTION BOX



FLOOR -1



FOYER -1

SCALE 1/250